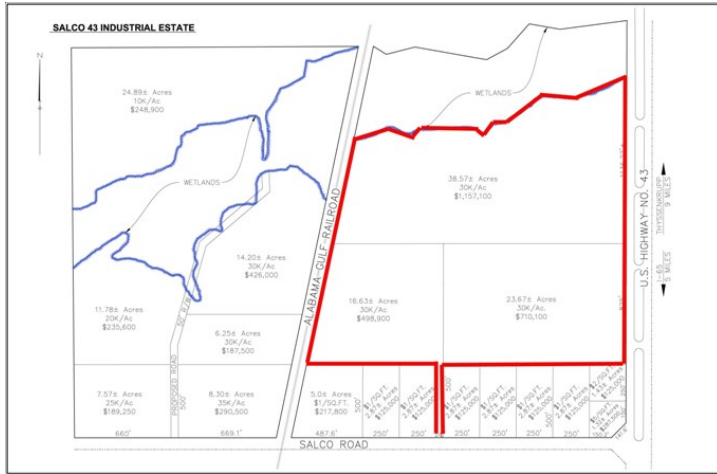


Site Profile

Alabama Site Selection Database

Salco 43 Industrial

City: Creola County: Mobile
MSA: Mobile, AL



General Site Data	
Total Acres	227
Available Acres	170
Additional Available	Yes
Largest Tract	100
Smallest Tract	1
Protective Covenants	Yes
Phase 1 Environmental	Yes
Preliminary Geotechnical:	Yes
Topography	Flat
Preliminary Wetlands Assessment:	Yes
Ecological Review:	No
Cultural Resources Review:	No
Zoning	None
Previous Use	Forest
Previous Use Description	Timberland

Site Id: 109	
Street Address	U.S. Hwy 43 & Salco Rd 5 miles north of I-65
Nearest City	Creola
Within City Limits	No
Zip Code	36525
Latitude	30.9718
Longitude	-88.0322
Located in Industrial Park	Yes
Park Name	Salco 43 Industrial
Within Enterprise Zone	No
Within Favored Geographic Area	No
Within Renewal Community	No

Transportation	
Rail Service	Provider: A & G Railroad Co Track Status: Adjacent Track Provider #2: Track Status: Not Specified
Navigable Waterway	Mobile River Dock Facility: Port 11 to 25 miles
Nearest Commercial Air City	Mobile, AL Miles to Nearest Service: 22

Highways			
Highway Type	Highway Name	Miles to Access	Four Lane
Interstate	I-10	20.0	
Interstate	I-65	5.0	
Federal Highway	43	0.0	Yes
Federal Highway	45	14.0	Yes
Alabama Highway	13	0.0	Yes

Price	
Sale Price	\$20,000.00 per acre
Land Lease Rate (Annual)	per acre
Negotiable?	Yes
Date Quoted	Jun 14, 2013
Price Comments	Sale prices range from \$20,000 to \$40,000 per acre.

Utilities	
Natural Gas	Provider: Clarke-Mobile Gas District Status: Existing Connection Size of Main: 24 in. Main PSI: 1200
Water	Provider: Lemoyne Water System Status: Existing Connection Size of Main: 6 in.
Sewer	Provider: Integra Water, LLC Status: Existing Connection Size of Main: 10 in.
Electricity	Provider #1: Alabama Power Company Status: Existing Connection Service to Property (Distribution): Transmission: Provider #2:
Telecommunications	Provider: AT&T Fiber Optics: Yes Redundancy: No xDSL Available: No

Site Profile

Alabama Site Selection Database

Salco 43 Industrial

City: Creola

County: Mobile
MSA: Mobile, AL

General Comments

Industrial site 9 miles from ThyssenKrupp. Rail frontage. Convenient to I-65. Wetlands delineation in place.

Site information is current as of 6/14/13

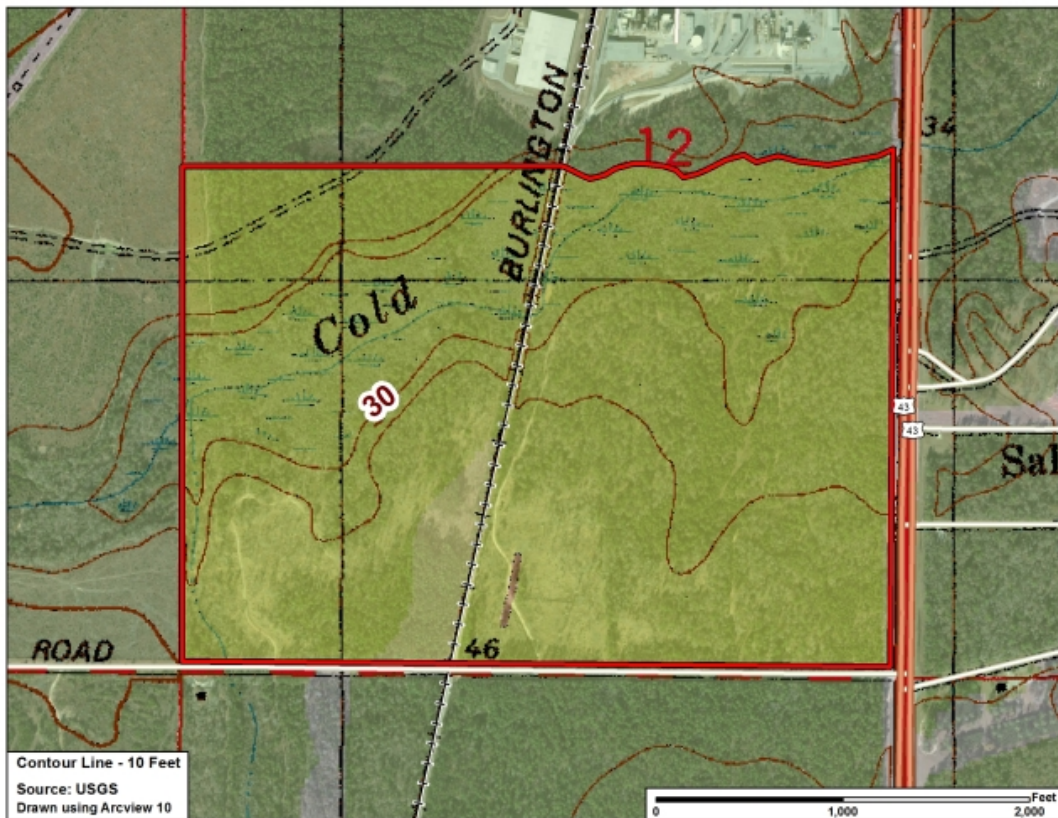
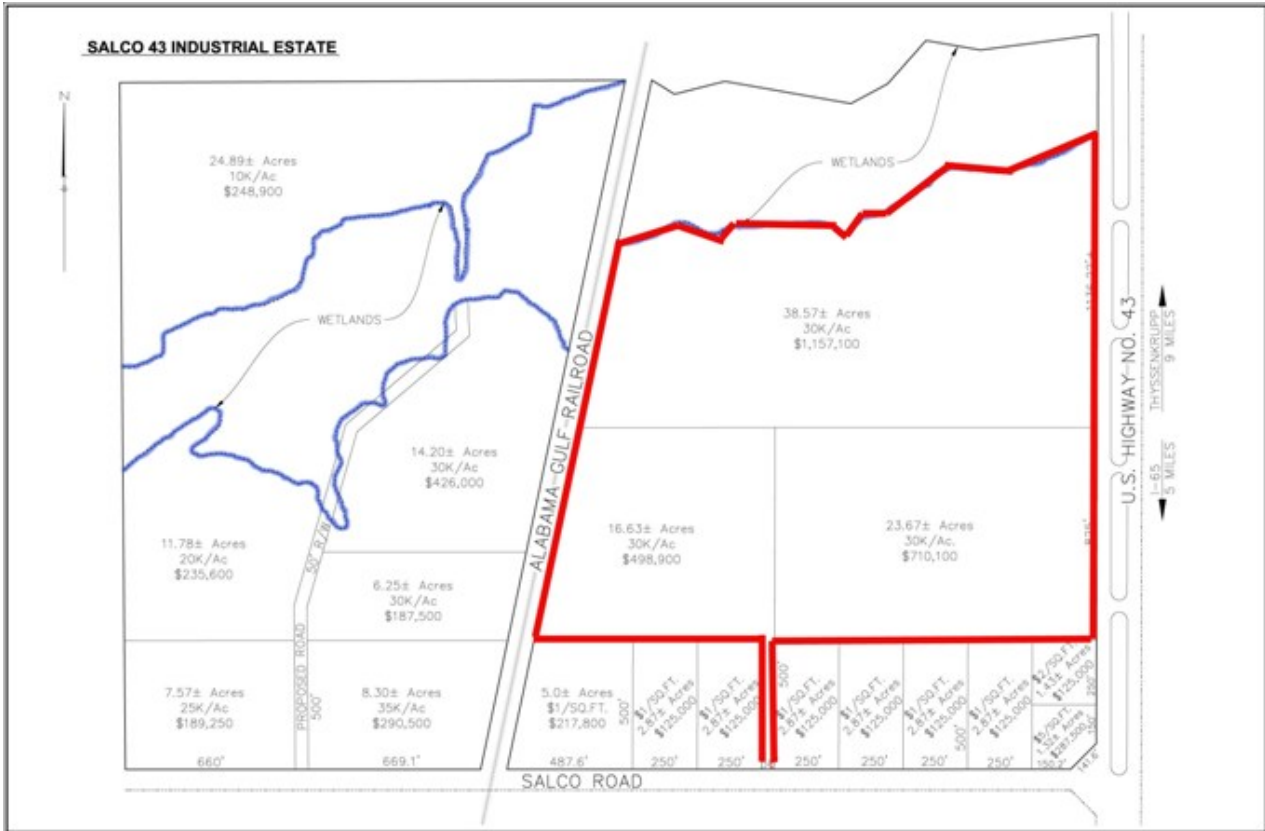
Site Profile

Alabama Site Selection Database

Salco 43 Industrial

City: Creola

County: Mobile
MSA: Mobile, AL



This information has been secured from sources we believe to be reliable; however, we make no representation or warranties, expressed or implied, as to the accuracy of the information.

Economic Development Partnership of Alabama
www.edpa.org

Site Profile

Alabama Site Selection Database

Salco 43 Industrial

City: Creola County: Mobile
MSA: Mobile, AL



This information has been secured from sources we believe to be reliable; however, we make no representation or warranties, expressed or implied, as to the accuracy of the information.

Economic Development Partnership of Alabama
www.edpa.org