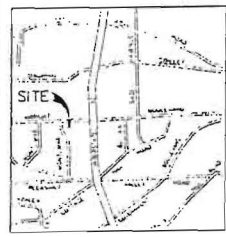
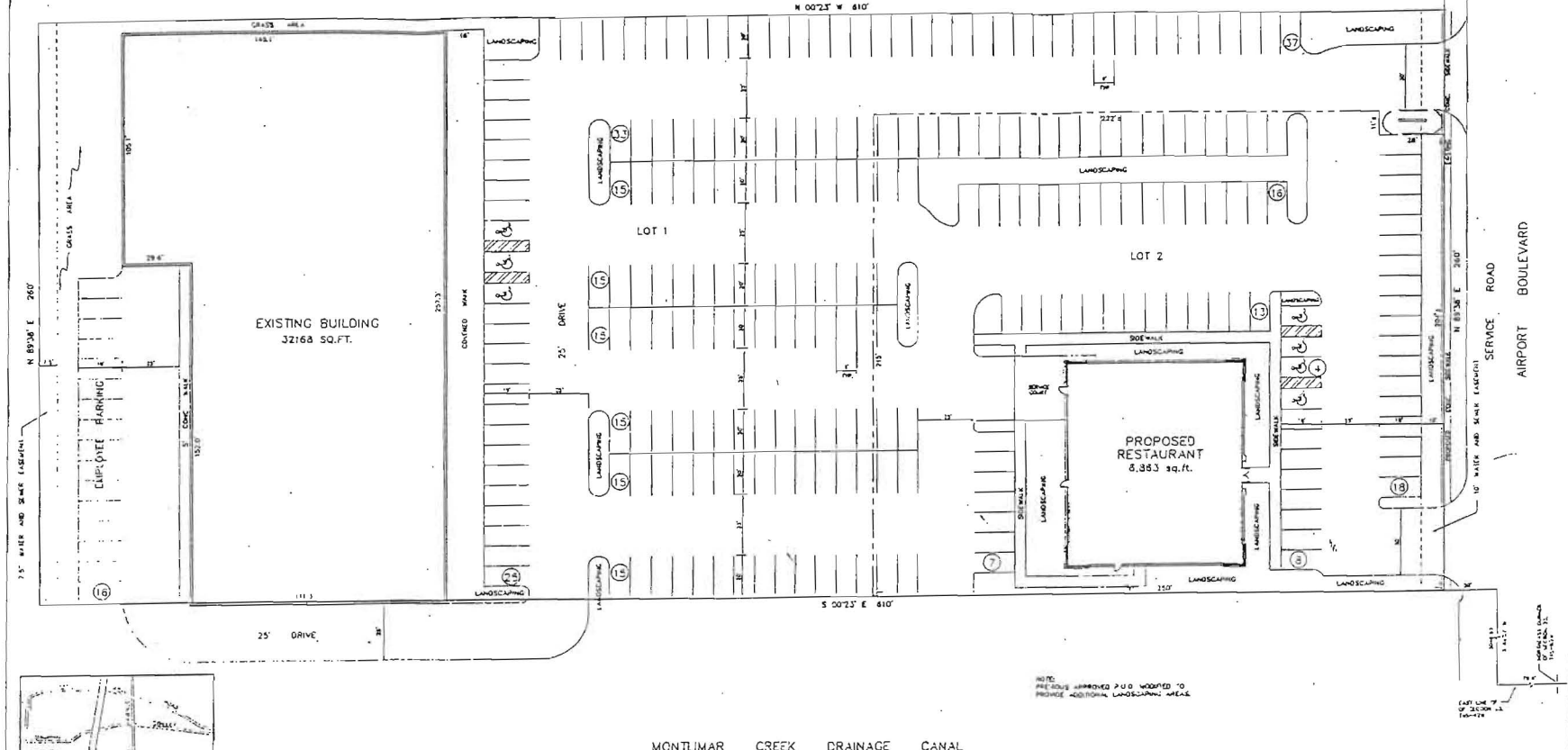


NOTICE: THE DISTANCE BETWEEN CORNERS OF SECTIONS IS SHOWN IN FEET AND INCHES. ALL DISTANCES ARE MEASURED ALONG THE CENTER LINE OF THE SECTION. A DISTANCE OF 1/4 OF AN INCH ON THE DRAWING IS EQUAL TO 10 FEET. THE DISTANCE BETWEEN CORNERS OF SECTIONS IS SHOWN IN FEET AND INCHES. ALL DISTANCES ARE MEASURED ALONG THE CENTER LINE OF THE SECTION. A DISTANCE OF 1/4 OF AN INCH ON THE DRAWING IS EQUAL TO 10 FEET. THE DISTANCE BETWEEN CORNERS OF SECTIONS IS SHOWN IN FEET AND INCHES. ALL DISTANCES ARE MEASURED ALONG THE CENTER LINE OF THE SECTION. A DISTANCE OF 1/4 OF AN INCH ON THE DRAWING IS EQUAL TO 10 FEET.



VICINITY MAP

LAND AREA 138,800 SQ. FT.  
 BUILDING AREA 39,010 SQ. FT.  
 PARKING 287 SPACES TOTAL ( 7 HANDICAP)

MONTILMAR CREEK DRAINAGE CANAL



NOTE: PREVIOUS APPROVED P.U.D. MODIFIED TO PROVIDE ADDITIONAL LANDSCAPING AREAS.

P.U.D.			
RESTER AND COLEMAN ENGINEERS, INC.			
88 MONTGOMERY PARK WEST, MOBILE, ALABAMA 36606-1118			
TELEPHONE NO. (334) 479-5110			
FAX NO. (334) 479-9322			
DATE	BY	DATE	SCALE
2-4	SP	1-11	1" = 20'
DATE	FILE NO.	DATE	FILE NO.
			S-05-A