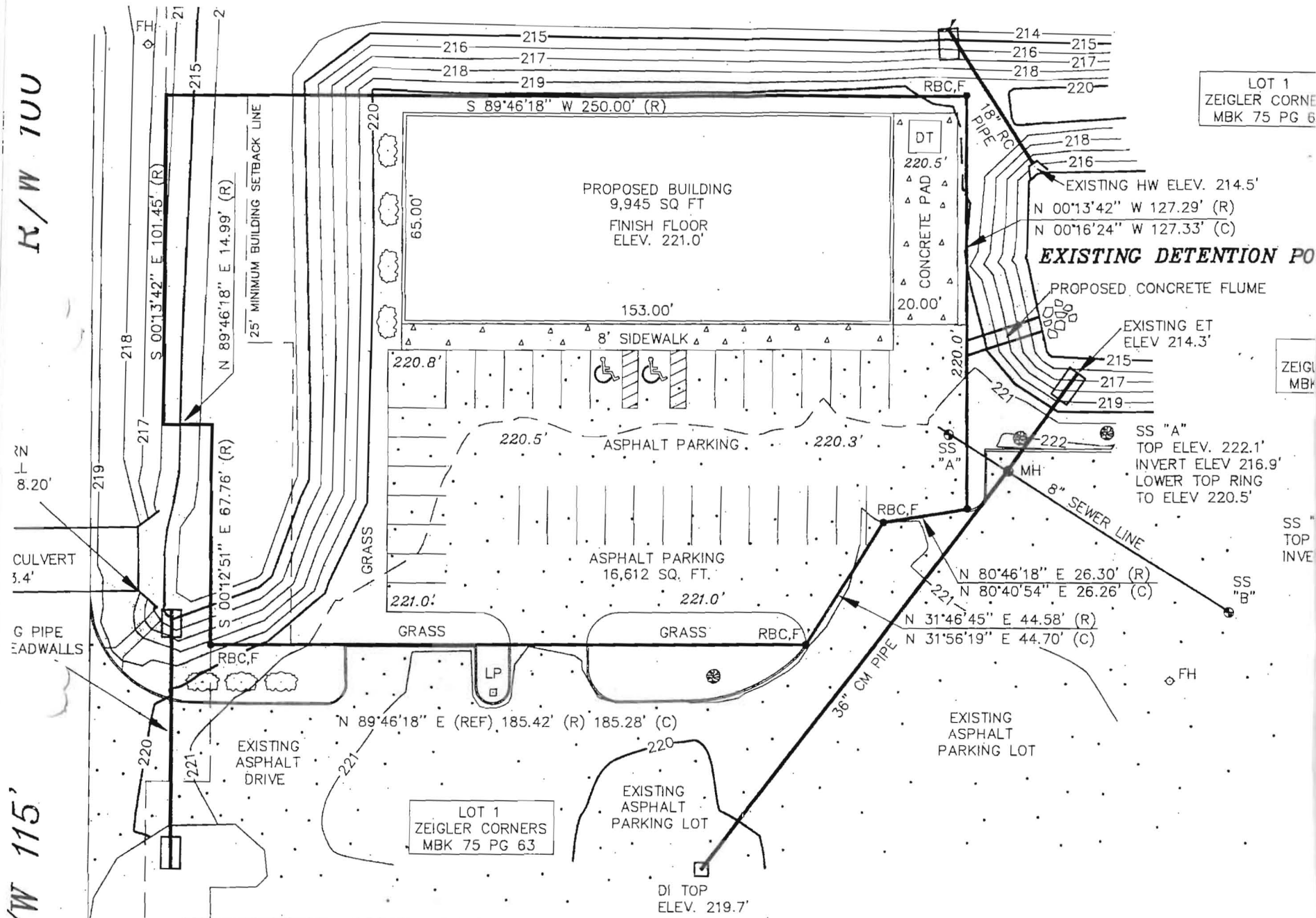


R/W 100

R/W 115

LOT 1
ZEIGLER CORNERS
MBK 75 PG 6

ZEIGLER
MBK



NOTES:
 THE CONTRACTOR SHALL USE SOUTH ALABAMA REGIONAL PLANNING COMMISSION "BEST MANAGEMENT PRACTICES" FOR CONSTRUCTION TO PREVENT SEDIMENT RUNOFF FROM LEAVING THE PROJECT.